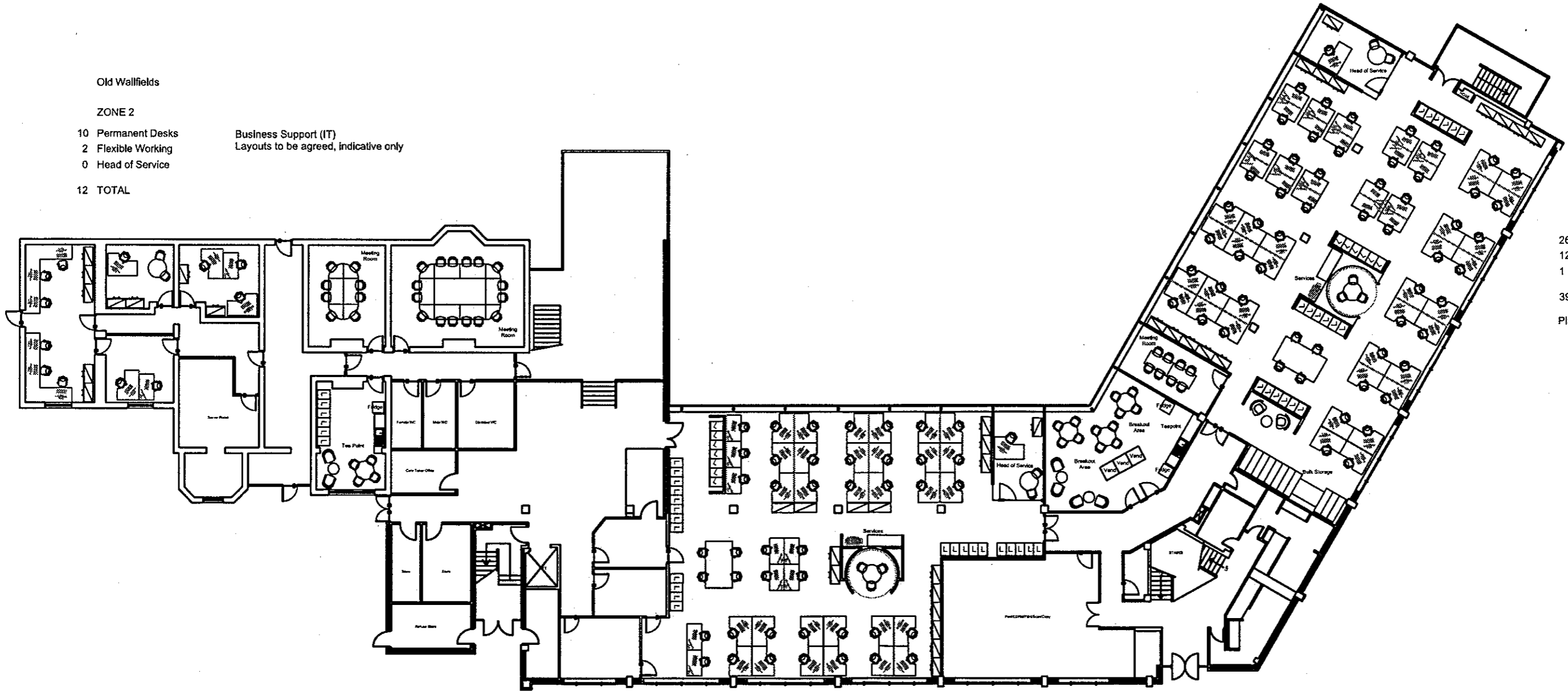


Old Wallfields

ZONE 2

- 10 Permanent Desks
- 2 Flexible Working
- 0 Head of Service
- 12 TOTAL

Business Support (IT)
Layouts to be agreed, indicative only



ZONE 4

- 26 Permanent Desks
- 12 Flexible Working
- 1 Head of Service

39 TOTAL

Planning & Building Control

GROUND FLOOR

ZONE 3

- 21 Permanent Desks
- 13 Flexible Working
- 1 Head of Service

35 TOTAL

Revenues & Benefits
Business Support
Customer Services

Old Wallfields

ZONE 1

- 12 Permanent Desks
- 8 Flexible Working
- 0 Head of Service
- 20 TOTAL

Environmental Services (limited changes)

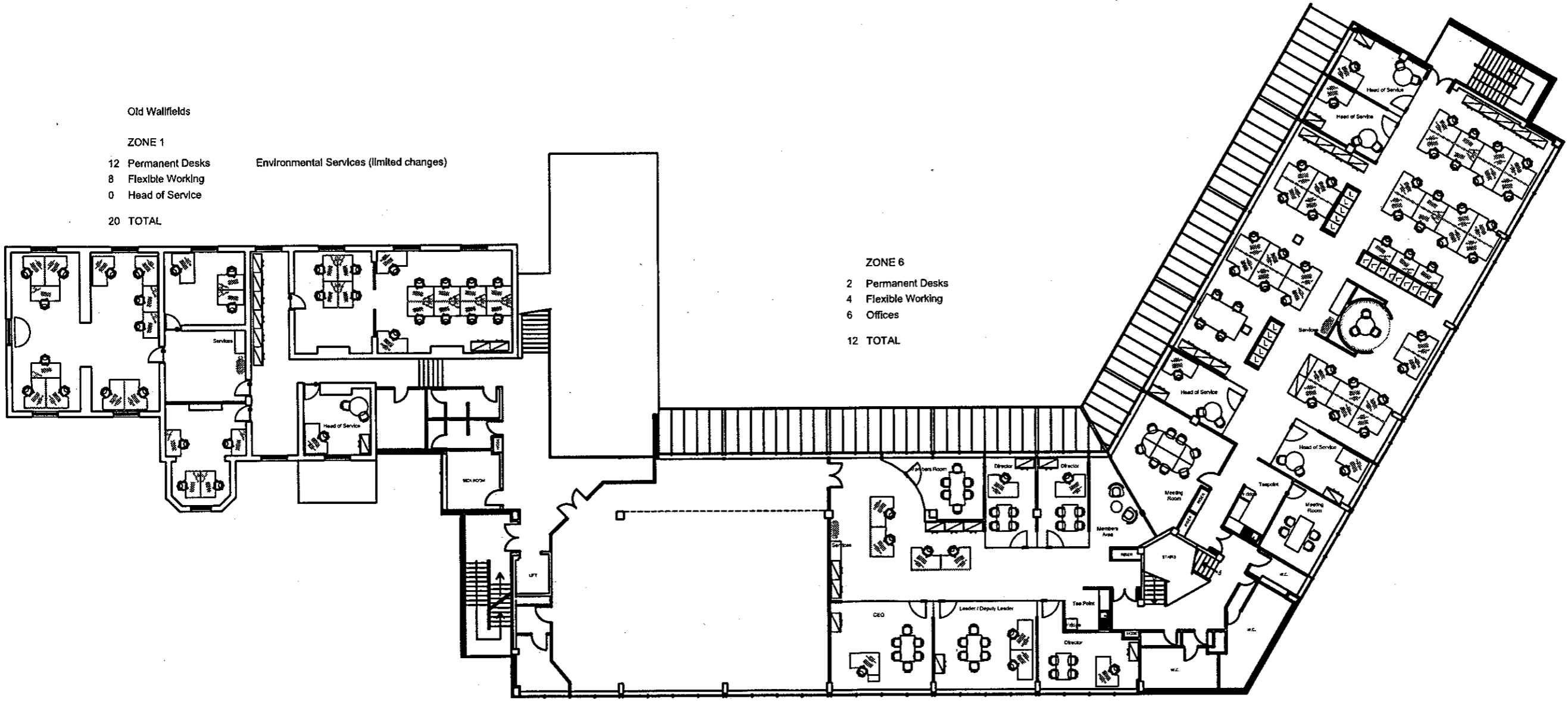
ZONE 6

- 2 Permanent Desks
- 4 Flexible Working
- 6 Offices
- 12 TOTAL

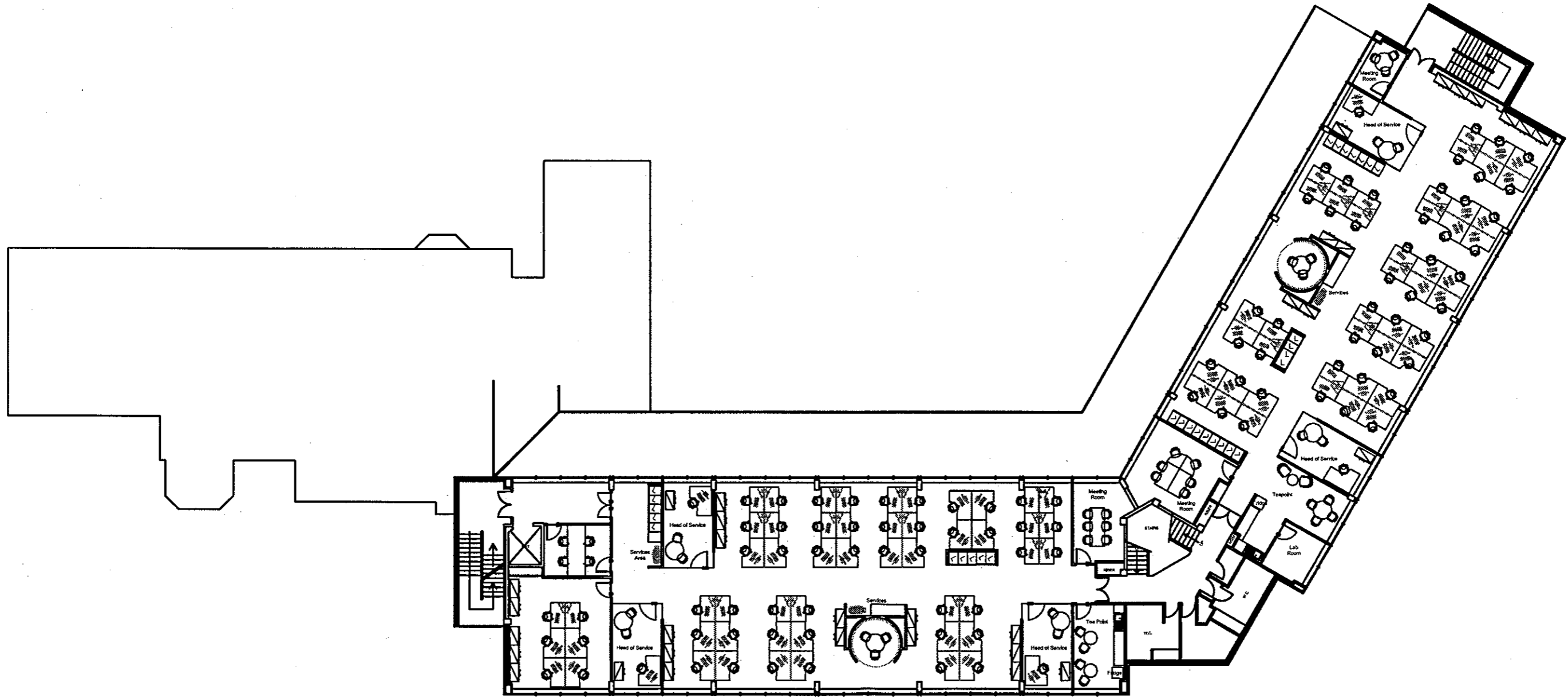
ZONE 5

- 30 Permanent Desks
- 11 Flexible Working
- 4 Head of Service
- 45 TOTAL

Democratic & Legal
Strategic Direction
Community Services
Customer Services (part)



FIRST FLOOR



SECOND FLOOR

- ZONE 7
- 26 Permanent Desks
 - 20 Flexible Working
 - 3 Head of Service
- 55 TOTAL
- HR
 - Business Support (part)
 - Financial Support

- ZONE 8
- 28 Permanent Desks
 - 18 Flexible Working
 - 2 Head of Service
- 48 TOTAL
- Community Safety
 - Health & Housing